

# Flood Barriers

## Standard Technical Data

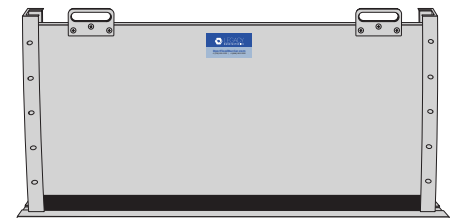
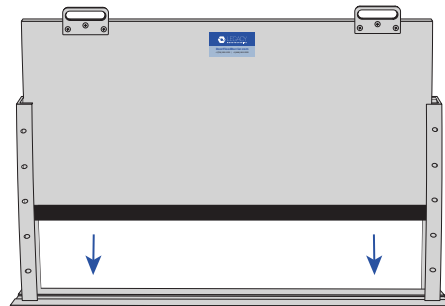
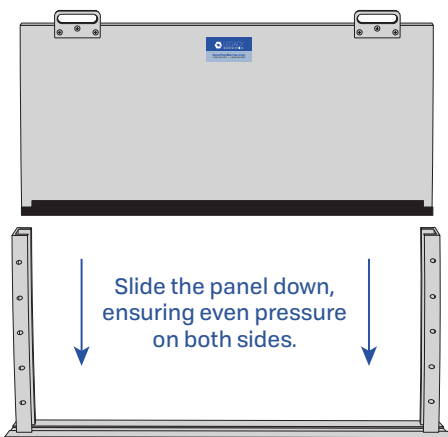
### Product Specifications

<b>Panel</b>	5052 type Marine-grade Aluminum Alloy
<b>Inside Mounted Frames</b>	1 1/4" x 29/32" x 1/8" aluminum extrusion 6062 alloy T5-T6, with 10-32 stainless steel allen head tightening screws. Black anodized channels are also available if specified.
<b>Outside Mounted Frames</b>	3/4" x 3/4" x 1/8" aluminum extrusion 6062 alloy T5-T6, with 10-32 stainless steel allen head tightening screws.
<b>Seal</b>	Neoprene lines the bottom of the shield. Sponge Rubber lines the channels. Our seals are composed of high-density rubber extrusions for increased strength with a low hardness that provides superior compression.
<b>Hardware</b>	#10 x 1-1/4" FHPH with plastic expansion tube anchors.  Snap covers for safety provided for the top of the channels and for the mounting holes.
<b>Installation</b>	Can be installed on hollow metal, aluminum or wood frames; and on concrete, brick or metal surfaces.
<b>Floor Surface</b>	Optional flat 1/4" x 2" bevels on 2 sides of the aluminum plate - #319 Threshold



## Operating Instructions

Once your channels are properly installed, the panel will easily slide down into place creating a tight seal.



**Inserting Shield:** With label facing out, insert the bottom of plate into channels. Lower the shield until there is a firm and even connection with the sill. Tighten the tension screws.

**Removing Shield:** Loosen the tension screws so the shield can be properly removed. Pull straight up on the plate to remove from channel.

**Storing Shield:** Once you have removed the shield from the channels, you can store the shield indoors. Make sure that there is no weight against the gasket.