

Flood Barriers

Standard Technical Data

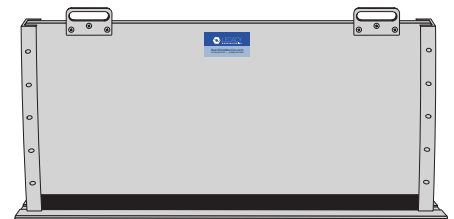
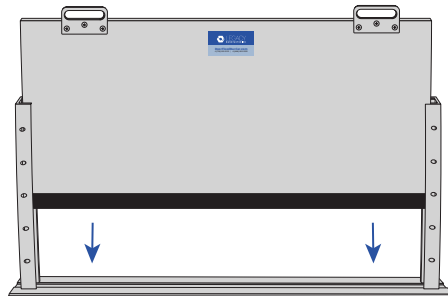
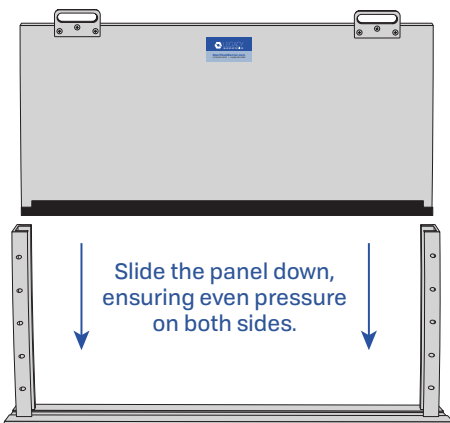
Product Specifications

Panel	5052 marine aluminum alloy
Frames	Channel 6062 alloy T5-T6, with 10-32 stainless steel Allen head tightening screws every 8" on center.
Seal	Solid Neoprene Seal
Hardware	#10 x 1-1/2" FHPH with plastic expansion tube anchors. Snap covers for safety provided for the top of the channels and for the mounting holes.
Installation	Can be installed on hollow metal, aluminum or wood frames; and on concrete, brick or metal surfaces.
Floor Surface	We recommend our 319 Threshold (1/4" x 2" beveled aluminum plate)



Operating Instructions

Once your channels are properly installed, the panel will easily slide down into place creating a tight seal.



Inserting Shield: With label facing out, insert the bottom of plate into channels. Lower the shield until there is a firm and even connection with the sill. Tighten the tension screws.

Removing Shield: Loosen the tension screws so the shield can be properly removed. Pull straight up on the plate to remove from channel.

Storing Shield: Once you have removed the shield from the channels, you can store the shield indoors. Make sure that there is no weight against the gasket.